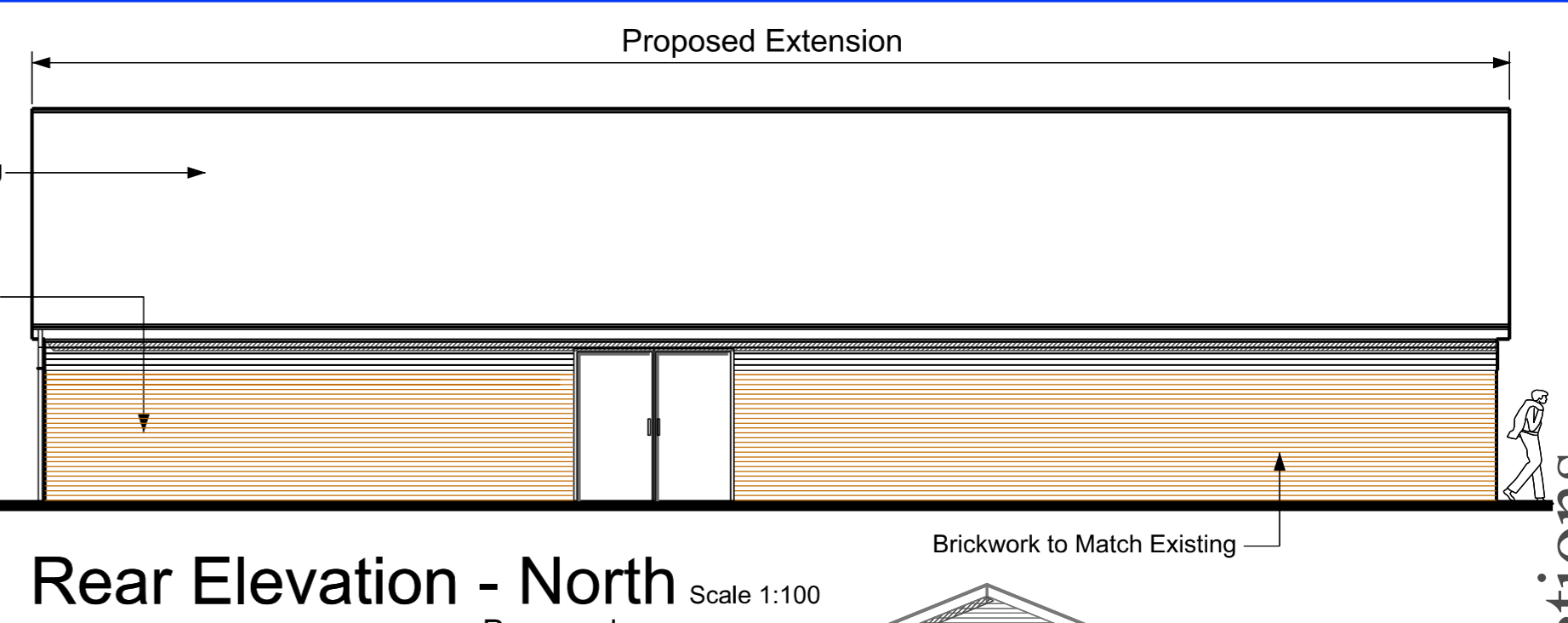
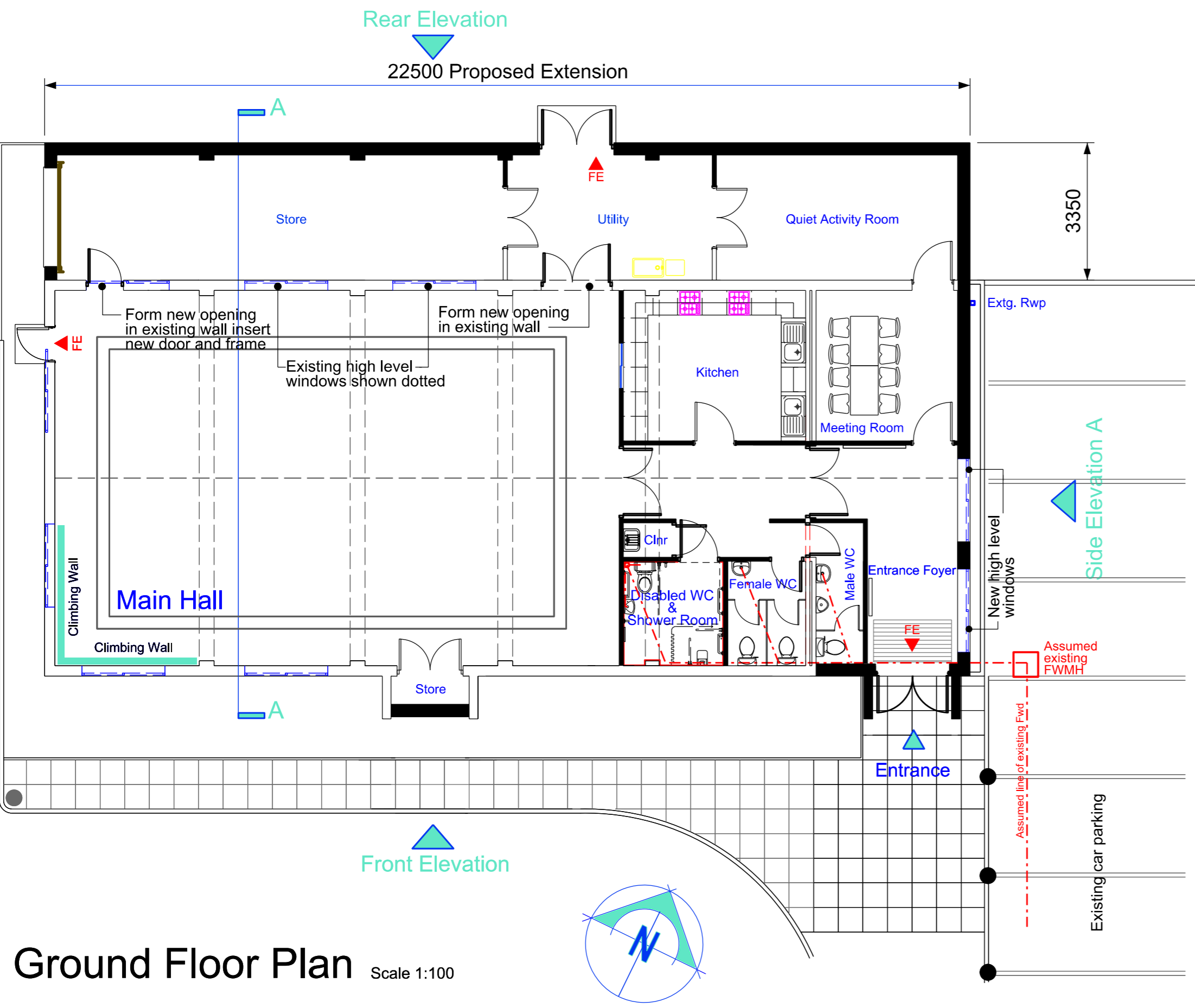


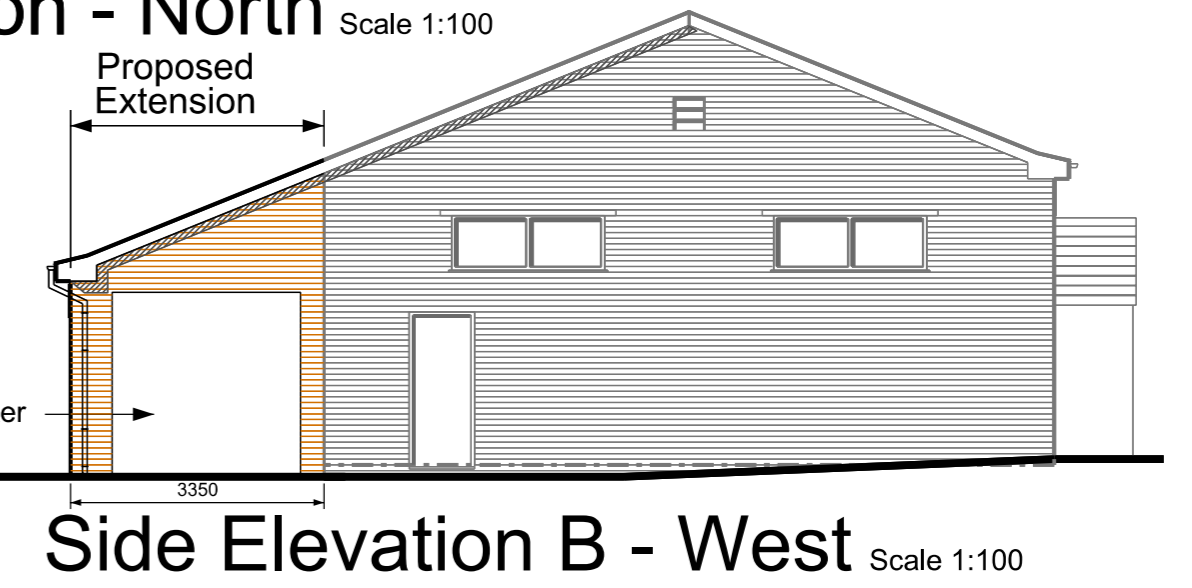
Front Elevation - South Scale 1:100



Rear Elevation - North Scale 1:100



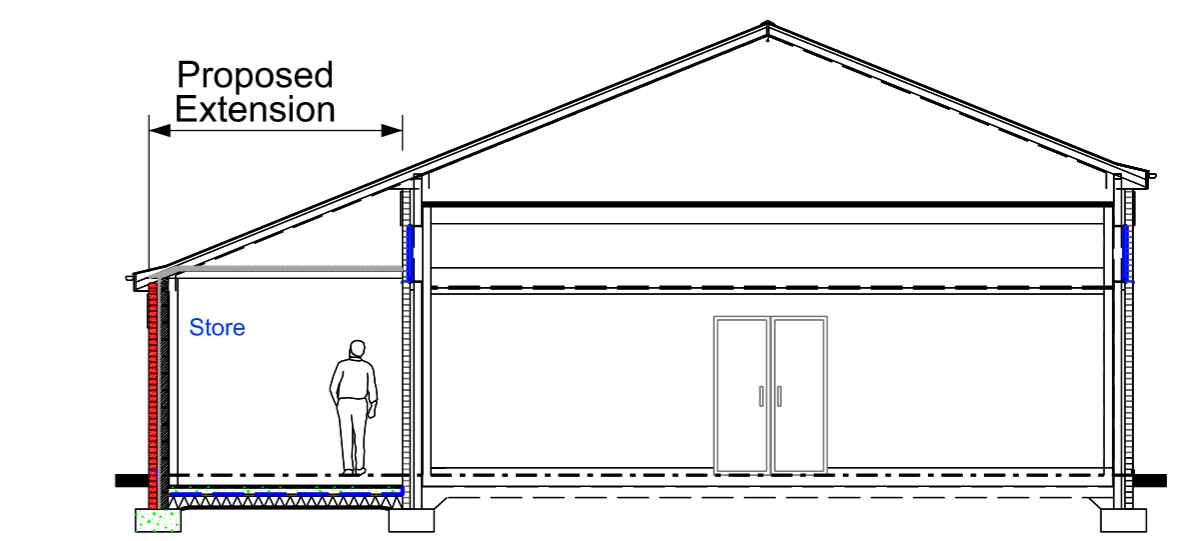
Ground Floor Plan Scale 1:100



Side Elevation B - West Scale 1:100



Side Elevation A - East Scale 1:100



Section A - A Scale 1:100

Rev. D - January 2011 : Drawing revised to suit latest layout.
 Rev. C - October 2010 : Drawing revised to Leaders Comments following meeting.
 Rev. B - October 2010 : Drawing revised to Leaders Comments.
 Rev. A - March 2009 : Drawing revised to accompany re-submitted Planning Application

Project Head Quarter Re- Development 1st Tidbury Green (Wythall) Scout Group			
Title Proposed Layout Plans, Elevations and Sections			
Scale 1:100 @ A2	Date Sept.09	Drawing No. CP.002	Revision D

Head Quarter Re-Development , 1st Tidbury Green (Wythall) Scout Group

Proposed Layout Plans, Elevations and Sections